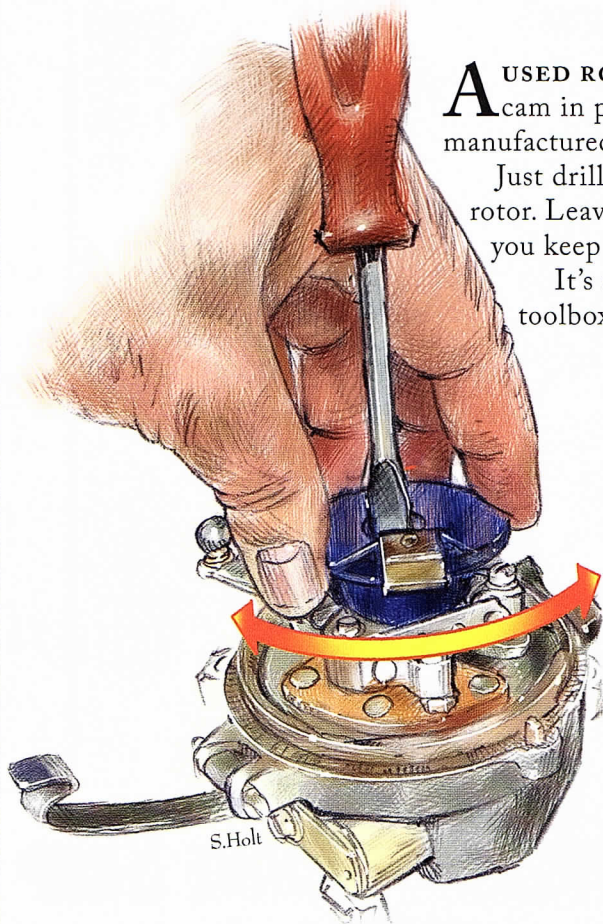


## Distributor Cam Tool

From David Adair, Oregon City, Oregon  
Illustrated by Stephen Holt, Urbana, Illinois

## Tiny Tips

From MAFCA Members



**A** USED ROTOR makes an excellent tool to hold the distributor cam in place when timing your car. (With all the shoddy, mis-manufactured rotors, finding a donor should not be a problem.)

Just drill a ½" diameter hole through the center of the rotor. Leave the metal contact or blade on, as this helps you keep in mind where No. 1 is when you are timing.

It's an excellent item to keep in your touring toolbox. ☺



*If you have a helpful tip about Model A restoration or maintenance to share with MAFCA members, please send it, along with a photo or sketch, to the MAFCA office: 250 S. Cypress Street, La Habra, CA 90631 or email to: Restorer@mafca.com*

# We've Revolutionized the way you find Model A Parts!

**FOUR CATALOGS TO CHOOSE FROM:**

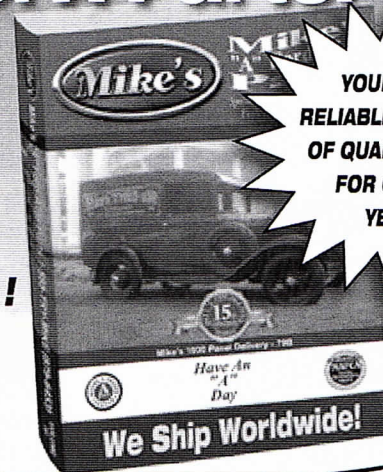
• Coupe • Pickup • Open Car • Sedan

**CALL & ORDER YOUR  
FREE CATALOG TODAY**

**AND ASK ABOUT OUR MONTHLY SPECIAL!**

**1-888-879-6453**

**www.mikes-afordable.com**



**YOUR MOST  
RELIABLE SUPPLIER  
OF QUALITY PARTS  
FOR OVER 15  
YEARS!**